

The Trinity at Herons Lake, Theale, Reading RG7 5JG

£565,000



Tailor-made incentives available to get you moving*

The Trinity is a stylish and spacious three-storey home designed for modern family living. The ground floor offers an open-plan layout that flows effortlessly from a well-appointed U-shaped kitchen into the living and dining area, creating a light and sociable space. A feature bay window to the front adds character, while bi-fold doors at the rear open wide to the garden, seamlessly blending indoor and outdoor living. Set across three floors, The Trinity offers four well-proportioned bedrooms, providing flexibility for growing families or home working. The top floor is dedicated to an impressive principal bedroom suite, complete with a private dressing area and ensuite, offering a peaceful retreat from the rest of the home.

*T&Cs apply. Speak to our sales advisors for more information.

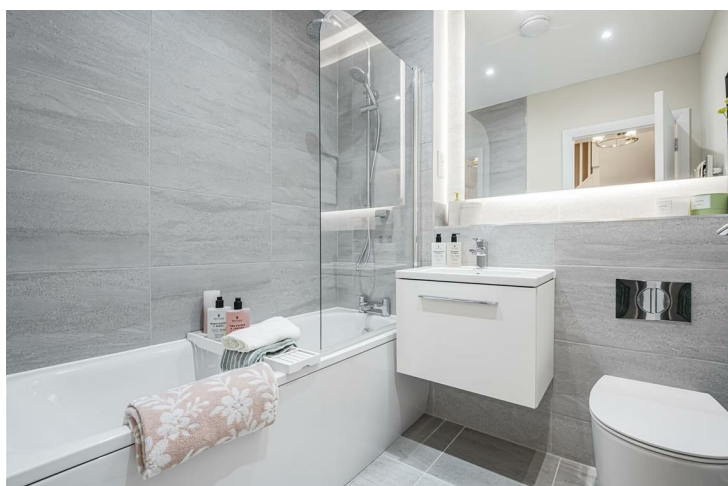
Interested? Please contact our New Homes team to find out more, or to book a viewing.

newhomes@haslams.net
0118 960 1010



- Brand new lakeside community
- Four bedroom homes over three stories
- Open plan layout on ground floor
- 2 off-road parking spaces
- Easy reach of Theale Station and M4 corridor
- Plenty of nearby amenities including Theale High St, Sainsburys Superstore and IKEA





Further details

Council tax band New Build

Agent's notes

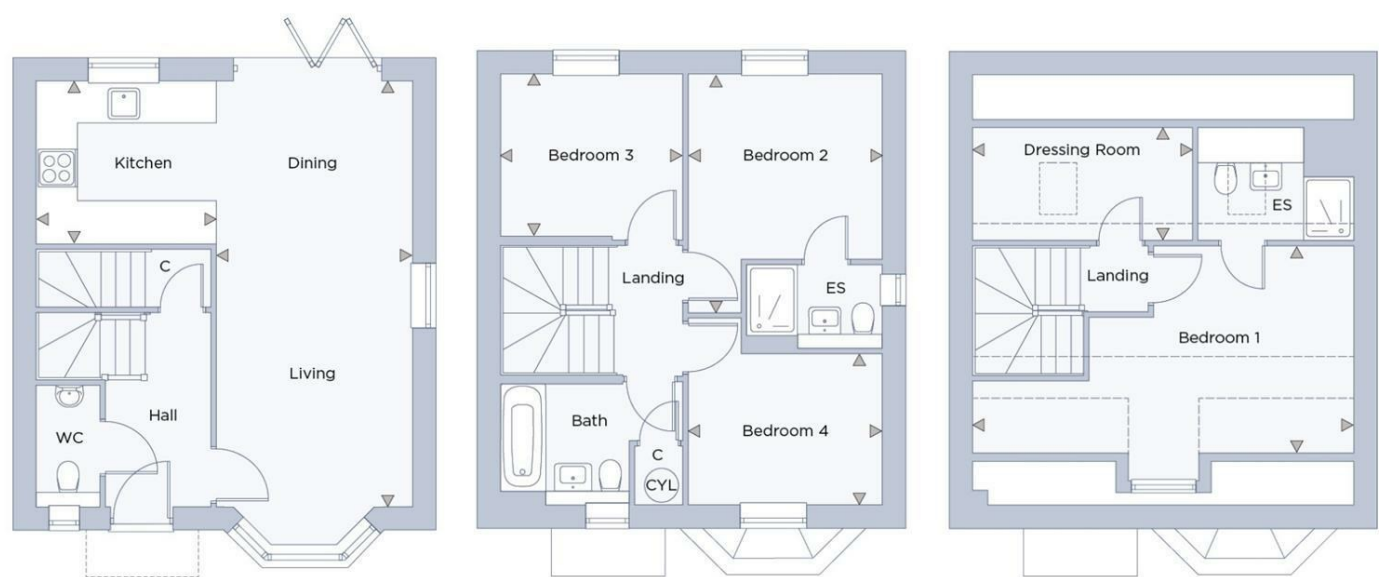
Estimated build completion: April 2025

Estate fee: TBC

Reservation Fee: Please note that to secure an offer on this property, you will be required to pay a fee of £500. For specific terms, please contact our office.

Please note that some images are CGIs or from the showhome and are to be used as a guide only.

Floorplan



Ground Floor Room	Dimensions (feet & inches)
Living/ dining	22'5" x 19'4"
Kitchen	9'6" x 8'5"

First Floor Room	Dimensions (feet & inches)
Bedroom 2	12'4" x 10'1"
Bedroom 3	9'5" x 8'5"
Bedroom 4	10'1" x 7'1"

Second Floor Room	Dimensions (feet & inches)
Bedroom 1	19'1" x 10'9"
Dressing room	11'5" x 5'10"



Please contact our New Homes team to find out more, or to book a viewing.

newhomes@haslams.net
0118 960 1010

The specifications outlined in this brochure are indicative only. Developers reserve the right to make any alterations to the specifications without warning. Whilst these particulars are prepared with all due care, the information is intended as a preliminary guide only. The computer generated images and photographs do not necessarily represent the actual finishings/elevation or treatments, furnishings and fittings at this development. Room measurements are approximate only. Floor plans, dimensions and specifications are correct at the time of print. Nothing contained in this brochure shall constitute or form part of any contract. Information contained in this brochure is accurate at the time of going to print.